

Parametrix

Sources: WISAARD, WA DAHP, WA RCO, SRTC, Spokane Housing Authority, Spokane County, City of Spokane, WSDOT, Mapbox, OpenStreetMap

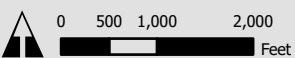
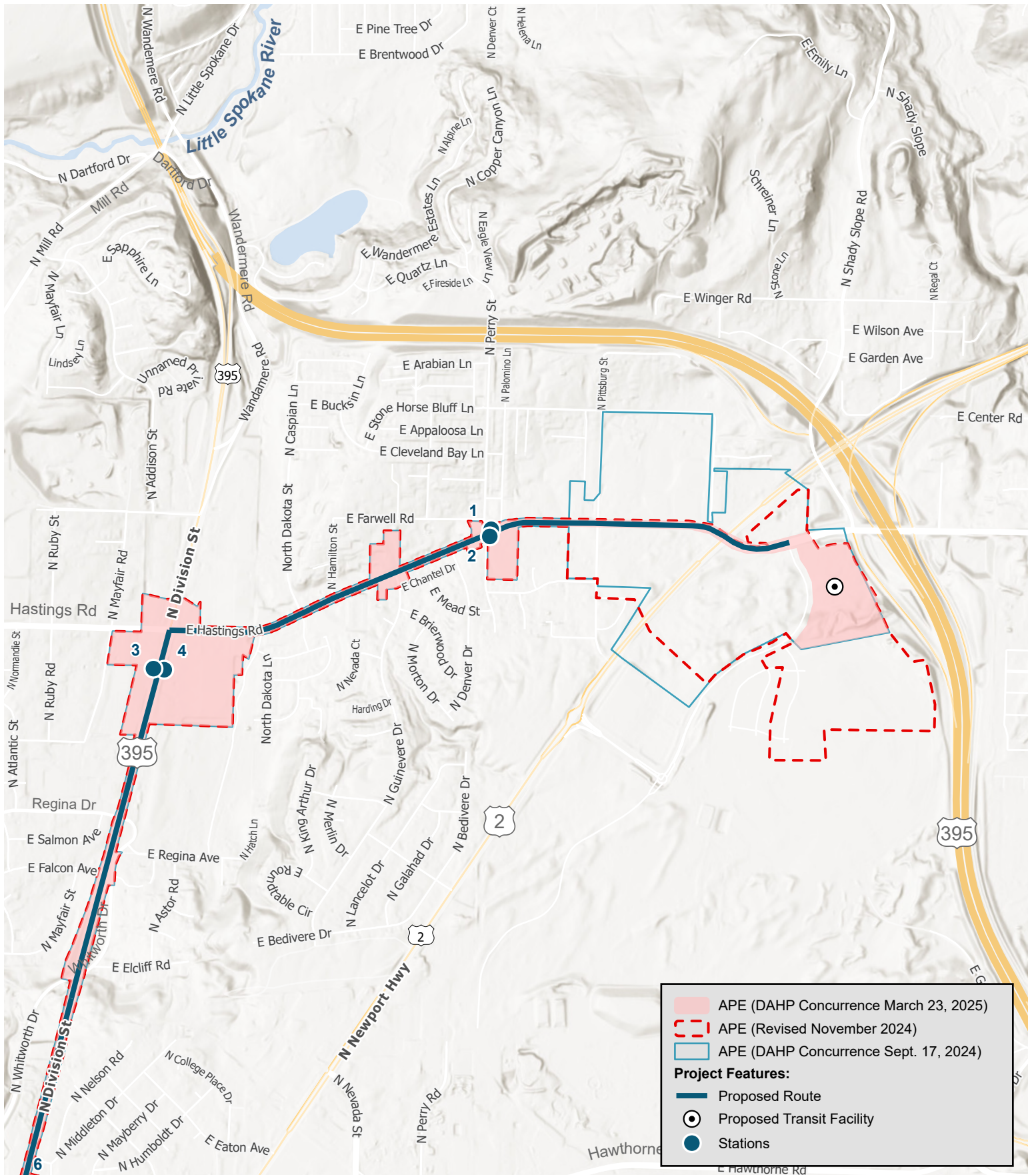


Figure 1-2. Project Area of Potential Effects Overview
Cultural Resources Assessment for
Division Street Bus Rapid Transit Project

Spokane, Spokane County, Washington



Parametrix

Sources: WISAARD, WA DAHP, WA RCO, SRTC, Spokane Housing Authority, Spokane County, City of Spokane, WSDOT, Mapbox, OpenStreetMap

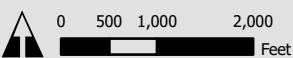
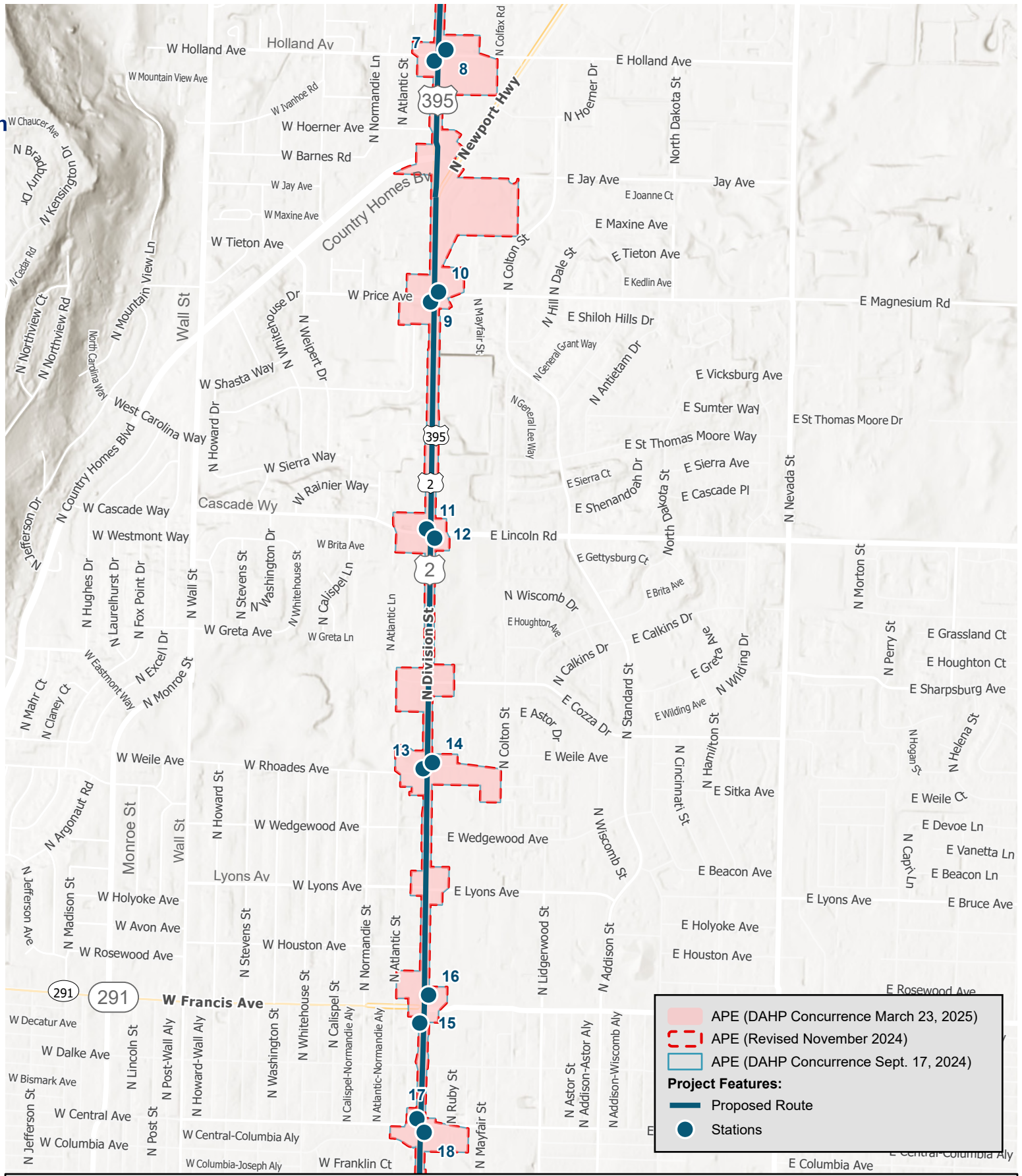


Figure 1-3. North Portion of the Area of Potential Effects, North Section
 Cultural Resources Assessment for
 Division Street Bus Rapid Transit Project

Spokane, Spokane County, Washington



	APE (DAHP Concurrence March 23, 2025)
	APE (Revised November 2024)
	APE (DAHP Concurrence Sept. 17, 2024)
Project Features:	
	Proposed Route
	Stations

Parametrix

Sources: WISAARD, WA DAHP, WA RCO, SRTC, Spokane Housing Authority, Spokane County, City of Spokane, WSDOT, Mapbox, OpenStreetMap

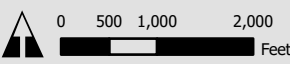
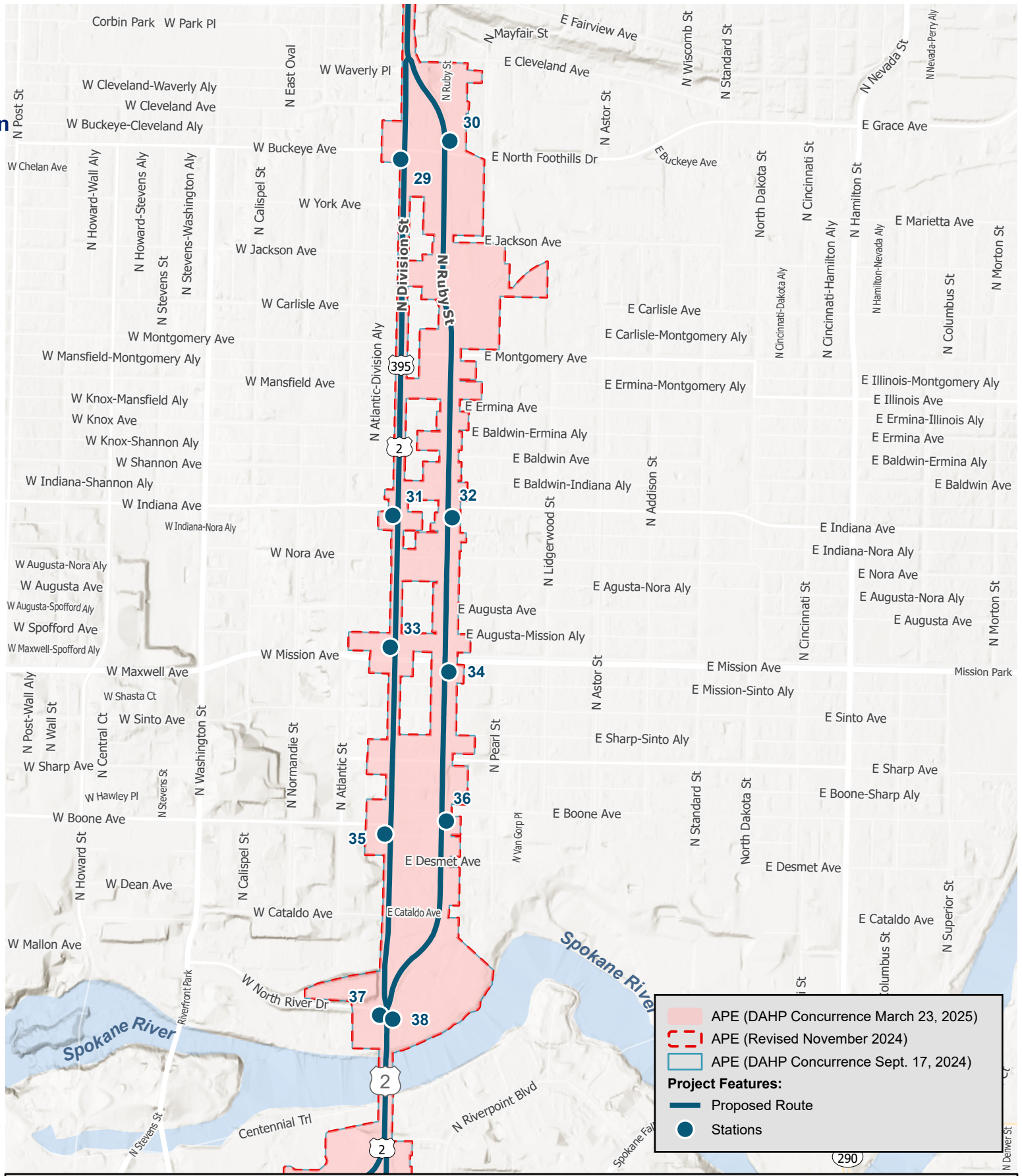


Figure 1-5. Mainline Portion of the Area of Potential Effects, North Section
 Cultural Resources Assessment for
 Division Street Bus Rapid Transit Project

tion



Parametrix

Sources: WISAARD, WA DAHP, WA RCO, SRTC, Spokane Housing Authority, Spokane County, City of Spokane, WSDOT, Mapbox, OpenStreetMap

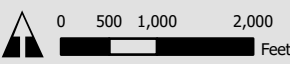
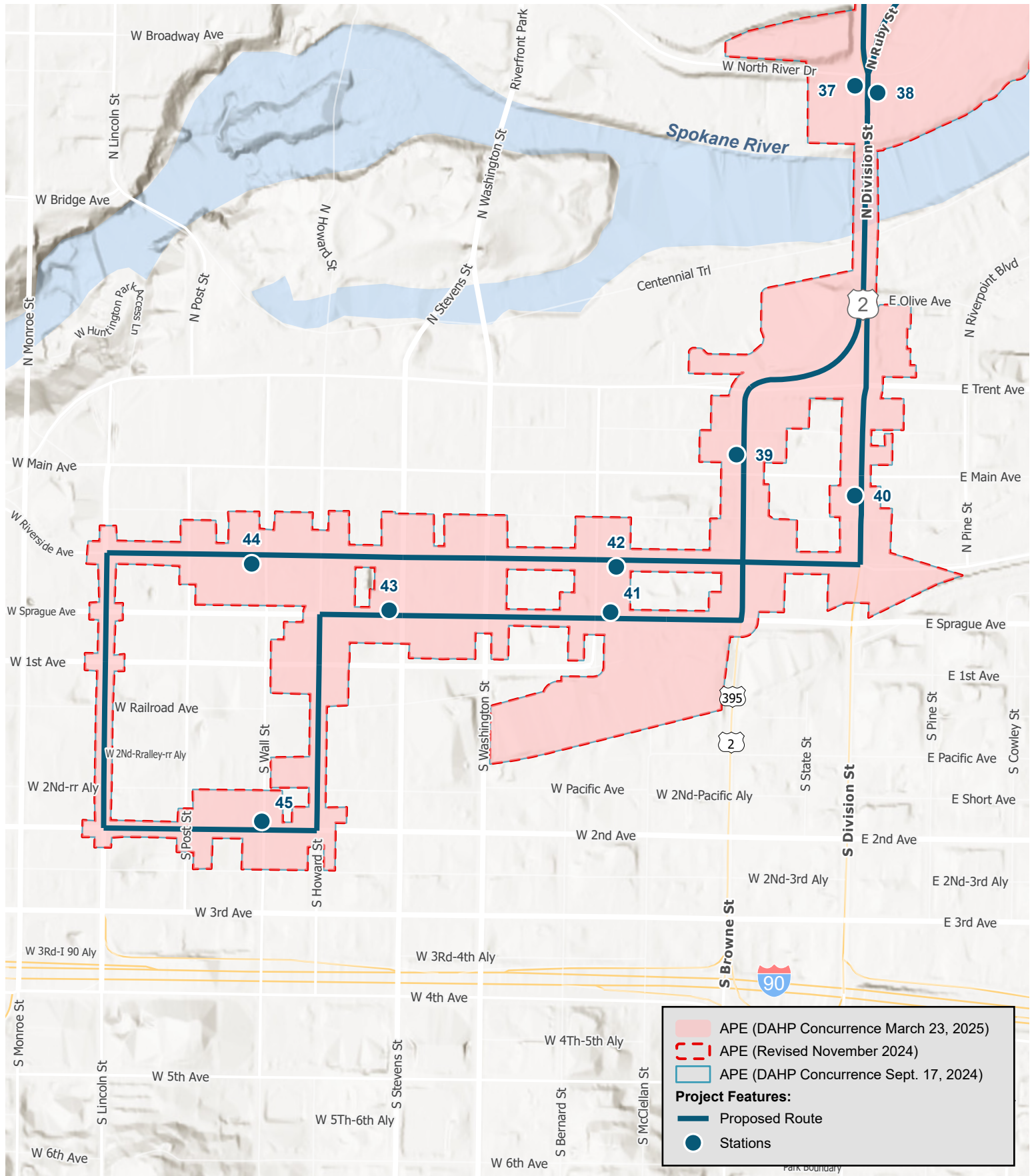


Figure 1-7. Mainline Portion of the Area of Potential Effects, South Section
Cultural Resources Assessment for
Division Street Bus Rapid Transit Project

Spokane, Spokane County, Washington



Parametrix

Sources: WISAARD, WA DAHP, WA RCO, SRTC, Spokane Housing Authority, Spokane County, City of Spokane, WSDOT, Mapbox, OpenStreetMap

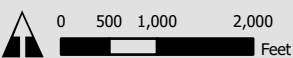


Figure 1-8. South Portion of the Area of Potential Effects
Cultural Resources Assessment for
Division Street Bus Rapid Transit Project

Spokane, Spokane County, Washington